

Usage Monitoring in 3 Easy Steps

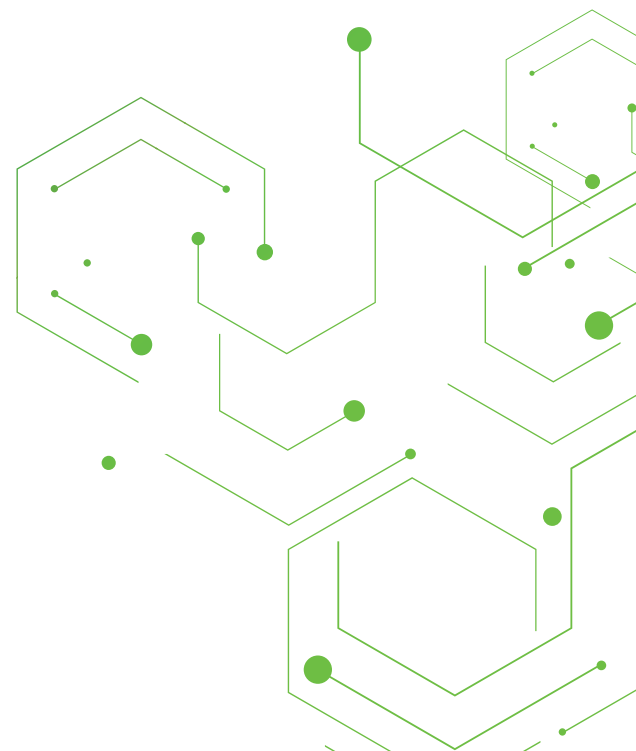


For distributed enterprises, monitoring traffic across all locations is an essential part of understanding network health. AppNeta's Usage monitoring provides customers with the ability to see how bandwidth across the enterprise, or at any given location, is being devoted to particular applications, hosts and users.

Collecting and analyzing flow data is a critical piece of monitoring the end-user experience across the network. Without the context of real-user traffic, IT can be caught off guard when users report issues with business-critical apps.

Understanding Usage Monitoring

AppNeta Enterprise Monitoring Points (EMPs) capture traffic that is sent over the network for the purposes of application and user identification. Unlike NetFlow, AppNeta Usage data captures 100% of traffic and performs Deep Packet Inspection to provide visibility into over 2,000 different apps that could be running on the network. AppNeta updates app definitions monthly to ensure even new apps are identified. Additionally, custom apps can be centrally defined to cover internal web apps.



Setting Up Usage Monitoring

To monitor traffic passing through a network with AppNeta, just follow a few simple steps.

STEP 1

DEPLOY A MONITORING POINT

Setting up an EMP involves deciding where to deploy it and configuring your firewall to allow it to communicate securely back to AppNeta Performance Manager. The Monitoring Point 'location' should be set within the web interface.

- *Deploy at an aggregation point* - Typically at a gateway or a VLAN trunk. This allows you to monitor traffic from as many users and applications as possible.
- *Deploy downstream of Network Address Translation (NAT)* - This allows you to see private IP addresses rather than public IP addresses. This is helpful when you need to know which user is connected to a particular application or is using an excessive amount of bandwidth.

STEP 2

CONNECT THE MONITORING POINT TO THE SWITCH PORT YOU WANT TO MONITOR

Unlike Delivery and Experience monitoring, which initiate tests, Usage monitoring involves passively monitoring traffic. It is most effective to monitor traffic at an aggregation point in the network.

There are two methods for physically connecting a monitoring point to your network for Usage monitoring: "out-of-band" and "inline". The out-of-band method uses one port on the monitoring point. The inline method uses two. To learn more about cabling for Monitoring Points, visit the AppNeta Documentation site.

STEP 3

IDENTIFY LOCAL SUBNETS

Prior to monitoring, in order for AppNeta Performance Manager to be able to distinguish between inbound and outbound traffic, you need to identify the subnets local to the monitoring point. Configuring traffic direction also enables you to resolve hostnames on local subnets. By default, hostnames are resolved every time a Usage monitoring page is loaded. Configuring traffic direction ensures that IP addresses in local subnets are resolved at the time flow records are generated, and that that information is preserved for the duration of Usage monitoring history. Addresses in external subnets will continue to be resolved in real-time.

Once Usage monitoring has been set up and turned on, monitoring data will start being collected within minutes and you can halt data collection at any time. Next steps include setting up Usage monitoring alerts, creating custom applications, and enabling user resolution. For more information on Usage monitoring visit our [documentation](#) site or contact your Customer Success Manager.

ABOUT APPNETA

AppNeta is the only network performance monitoring solution that delivers deep, actionable, end-to-end network performance data from the end-user perspective. With AppNeta's SaaS-based solution, IT and Network Ops teams at large, distributed enterprises can quickly pinpoint issues that affect network and business-critical cloud application performance, regardless of where they occur. AppNeta is trusted by some of the biggest Fortune 1000 companies, including 3 out of the 5 largest corporations in the world, as well as 4 out of the 5 largest cloud providers. For more information, visit www.appneta.com

1.800.508.5233 | SALES@APPNETA.COM | APPNETA.COM