

solarwinds



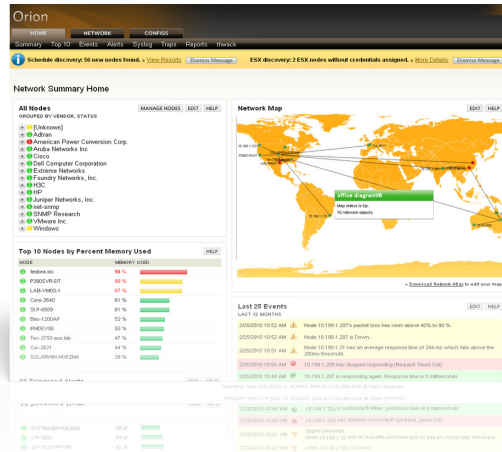
Orion Network Performance Monitor

AVAILABILITY & PERFORMANCE MANAGEMENT FOR YOUR NETWORK

"I have continued to watch this product evolve since version 7.0 and have always found the interface and built in tools helpful and well thought out. The drill downs into more detailed reports on interfaces, nodes and resources have made this product a mainstay in the network... Definitely the best NPM product I have ever worked with."

- eusbreeves
posted on solarwinds.com

Performance Monitoring for Your Ever-Evolving Network



You've got a tough job. Your mission – which yes, you already chose to accept – is to deliver 100% availability while everything on the network is constantly changing. To do that, you need a network performance monitoring solution that automatically adjusts to changes in your dynamic infrastructure. Even better, you need one that allows you to visually track performance statistics via network topology maps that update in real time. Anything less just doesn't cut it anymore.

We know the challenges you face, because we're network engineers just like you. We know what it takes to manage complex, evolving networks. In fact,

we pooled all of our "what if's" to design Orion Network Performance Monitor (NPM)—a powerful, yet easy-to-use, network availability and performance management solution that delivers the critical information you need to stay on top of your evolving network. Orion NPM enables you to quickly detect, diagnose, and resolve network performance problems and outages—before you start getting calls asking if the network is down. And Orion NPM is the easiest product of its kind to deploy, use, and maintain. That means you can spend your time actually managing your network, not supporting your network management software. Plus, with one-hour, do-it-yourself deployment, you'll be monitoring immediately, instead of filling out statements of work for more consultants. See how easy network management can be with Orion NPM!

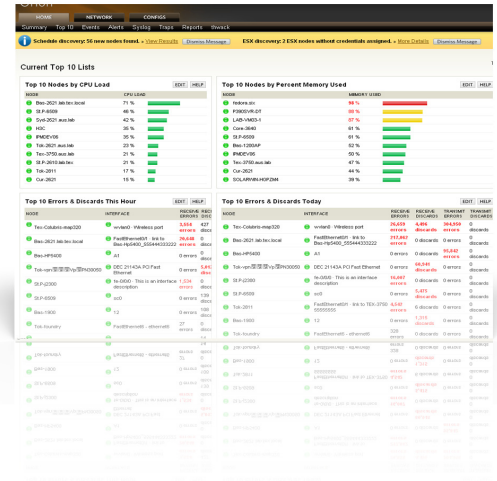
Orion NPM Highlights:

- **Monitors and analyzes real-time, in-depth, network performance statistics** for routers, switches, wireless access points, servers, & any other SNMP-enabled devices
- **Periodically scans your network for changes**, prompts you to monitor new devices, provides drag-and-drop update capabilities for your network maps, & automatically displays connections between devices
- **Automatically displays the connections between devices on your network maps** so that you can view your network pictorially & visually track performance statistics in real time
- **Monitors VMware servers (vSphere™, ESX, ESXi)** & automatically tracks VM performance through vMotion, as well as your virtualized Cisco Nexus 1000V switches
- **Enables advanced alerting for correlated events**, sustained conditions, & complex combinations of device states
- **Extends management capabilities** to NetFlow traffic analysis, IP SLA & VoIP monitoring, IP address management, network configuration management, & application and server performance
- **Scales to accommodate growth and management needs** with multiple polling engines, additional web servers, & an enterprise operations console

Orion NPM Features

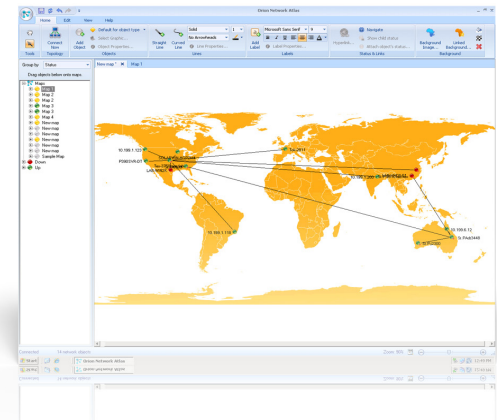
Availability & Performance Management

Orion NPM provides comprehensive fault management and monitors performance and availability to ensure that your network is always running at peak performance. Via a cutting-edge web interface, Orion NPM gives you a unified view into the performance of thousands of nodes and interfaces on your network. From a single web page, you can monitor performance metrics from any SNMP-enabled device, including routers, switches, firewalls, and servers. Commonly monitored metrics include bandwidth utilization, packet loss, latency, errors, discards, and QoS. With Orion NPM, you get the information you need to quickly fix issues before your users ever have a chance to call the help desk.



ConnectNow™ Topology Mapping

Orion NPM's Network Atlas™ automatically maps your network, allowing you to view your network pictorially and visually track performance statistics in real time via dynamic network maps. With our exclusive ConnectNow technology, you can automatically discover and display the connections between network devices on your maps. Choose from several built-in geographic map templates or import a logical image of your own network based on floor, building, department, or larger geographic location. Multiple network maps can also be nested to provide drill-down capabilities.

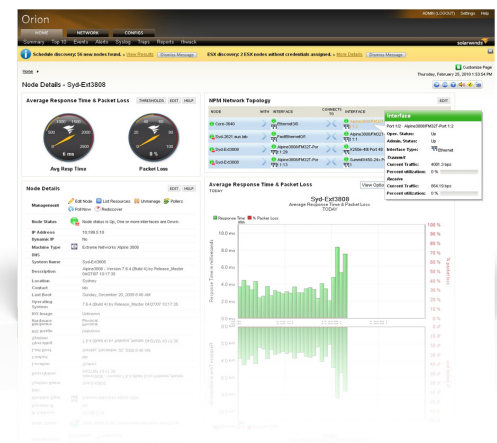


"The web-based interface provides instant, constant updates as to the status of our network to helpdesk staff, tech staff and management."

- pob
posted on solarwinds.com

Intuitive Point-and-Click Interface

When you need critical network information fast, you can't waste time trying to reverse-engineer the thought process of whoever designed the cryptic user interface of your network management software. Orion NPM's interface was designed by network engineers, for network engineers. The highly intuitive, fully customizable web-based interface offers point-and-click simplicity and allows you to remotely view network fault, availability, and performance information through detailed graphs, tables, and lists. You'll love the top 10 lists that give you at-a-glance visibility into the nodes and interfaces experiencing the highest amounts of network traffic, capacity utilization, response time, memory usage, CPU load, disk space volume, and more. Plus, real-time network maps enable you to visualize network health by location, while device troubleshooting displays present the metrics you need to quickly resolve problems with devices.

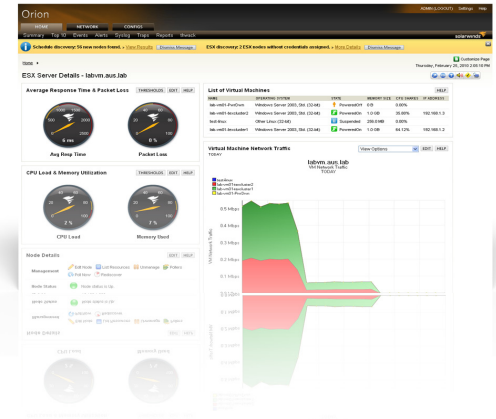


Virtual Datacenter Monitoring

Orion NPM monitors VMware servers (vSphere, ESX, and ESXi) to determine how the host servers are performing and to gauge the health of individual virtual machines.

Orion NPM gathers detailed information from each VMware server and its corresponding virtual machines, giving you insight into statistics such as CPU and memory utilization, disk usage, guest OS, network usage, and much more.

By monitoring specific virtual resources, Orion NPM can alert you to a virtual machine that is using excessive CPU resources or is approaching its allocated memory limit. This enables you to ensure that applications are performing well and that the virtual and physical resources on the server are optimized.



Enterprise Scalability

Orion NPM ensures that your network will never outgrow your management solution. As a highly scalable, enterprise network management platform, Orion NPM can accommodate network growth through the addition of multiple polling engines, additional web servers, and an enterprise operations console.

"[Orion] just keeps getting better with each release."

*- Psykobmbor
posted on solarwinds.com*

Advanced Alerting

Orion NPM enables you to quickly and easily configure powerful network alert engines to respond to hundreds of different network scenarios, including multiple condition checks. These network alerts help you recognize and correct issues before your users experience performance degradation or availability issues. With alerting support for correlated events and sustained conditions, Orion NPM ensures that you don't get paged at 3am unless there is a critical issue. Additionally, Orion NPM can automatically escalate network alerts until a problem is resolved.

Integrated Wireless Poller

While we all love the convenience of wireless, managing this technology can give you a headache like no other! Trying to monitor, secure, and support the multitude of wireless devices on the market today is a nearly impossible task... unless, of course, you have Orion NPM. Orion NPM's Integrated Wireless Poller enables you to easily manage wireless thin and autonomous access points and their associated clients. Orion NPM can monitor your wireless devices alongside your wired devices and provide you with alerts, reports, and Top 10 lists for your wireless infrastructure!

Universal Device Poller

Out of the box, Orion NPM ships with a MIB database that covers the vast majority of common network devices. But for that handful of odd devices that are lurking in your network—or for newer devices that have MIB tables—you can now collect valuable and highly detailed management data. Orion NPM makes it easy to create a custom poller to monitor any SNMP-enabled device value that has a MIB, including virtually any statistic that a network device records. You can also customize how you want the collected data displayed for graphing, alerting, and reporting purposes. And, using the MIB Transformation Wizard, you can convert MIB values into the units of measurement that are most useful to you.

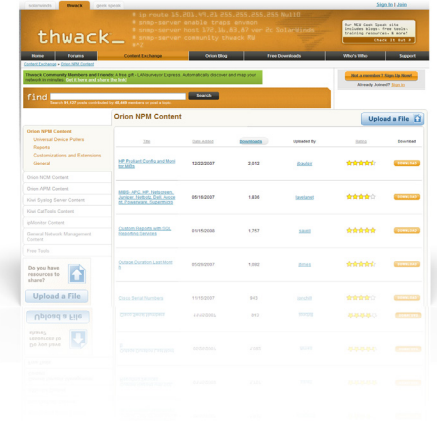
Report Writer

Orion NPM's advanced reporting engine enables you to quickly generate custom network reports that can be printed or viewed on the web. Shipping with numerous built-in reports, Orion NPM makes it easy to report on performance data over specific time periods or by network segment.

MODEL	MANAGES:
SL100	Up to 100 elements
SL250	Up to 250 elements
SL500	Up to 500 elements
SL2000	Up to 2000 elements
SLX	Unlimited elements

Community Content Exchange

thwack is a community website that provides SolarWinds customers with useful information, tools and valuable resources. thwack is now directly integrated into Orion NPM's interface, bringing new resources and helpful information to your Orion console, bringing new resources and helpful information directly to you. By deploying Orion NPM and using thwack, you'll be joining a community of thousands of network engineers who can help make your job easier. Having the power of thousands of engineers behind you brings many benefits, especially when it comes to sharing resources. On thwack, Orion customers share everything from custom reports, custom alerts, and custom views to application monitoring templates.



Orion NPM Modules:

- Application Performance Monitor
- IP Address Manager
- NetFlow Traffic Analyzer
- IP SLA Manager
- Network Configuration Manager

Orion NPM modules extend the capabilities of Orion NPM to network traffic analysis, VoIP infrastructure monitoring, IP address management, application monitoring, network config management, and server and application monitoring.

System Requirements

CPU Speed: 3.0 GHz; Hard Drive Space: 20 GB; Memory: 3 GB; Operating System: Windows 2003 and 2008 Server (32-bit or 64-bit) including R2, with IIS installed, running in 32-bit mode; .NET 3.5 Framework; Database: SQL Server 2005 SP1 / 2008 (Express, Standard, or Enterprise)

Automated Network Discovery

Maintaining a real-time list of network devices is no small task for today's dynamic networks. It's hard to keep track of your multiplying numbers of network devices, which is why we've designed Orion NPM's Network Sonar to automatically discover new devices that are added to your network. When new devices are discovered, Network Sonar checks your existing SNMP credentials and prompts you to begin monitoring the new devices. You can also leverage the built-in Network Atlas to quickly create and update your network maps and display connections to the new devices, ensuring your network maps are always up to date.

Cisco EnergyWise Monitoring

Cisco® EnergyWise focuses on reducing the energy consumption of all devices connected to a Cisco network ranging from Power over Ethernet (PoE) devices, such as IP phones and wireless access points, to IP-enabled building and lighting controllers. EnergyWise technology gives you a framework for discovering, monitoring, optimizing, advising, and regulating energy needs for your business. Cisco EnergyWise encompasses a highly intelligent, network-based approach to communicate messages that control energy between network devices and endpoints.

Role-based Access Control

Orion NPM allows you to establish unique accounts and specify which types of information are displayed within the Orion interface for a particular department, group, or user. This ensures that only the people who need to view specific information have access to it, providing an increased level of internal security. For example, Orion NPM can be configured so that the server team only sees the servers, while the Texas IT group has a view limited to the geography for which they are responsible.

Do-it-Yourself Deployment

Deploying Orion NPM is a simple three-step process. First, install and configure Orion NPM using a simple wizard interface. Next, let Orion NPM automatically discover your network. Finally, begin monitoring your network for fault and performance issues. You'll be done in less than an hour. No consultants required. Even better, with Orion NPM's intuitive web interface, you won't need to attend training classes, read books with large animals on the cover, or pour through manuals to start being productive with Orion NPM from day one.

For additional information, please contact SolarWinds at 866.530.8100 or e-mail sales@solarwinds.com. To locate an international reseller near you, visit www.solarwinds.com/distributor/locator.html