



# RTLS Controller

| Tags: Most Recent (47/47) | ID               | Name                | Category          | Status     | Map        | Zone       | Loc   | Health |
|---------------------------|------------------|---------------------|-------------------|------------|------------|------------|-------|--------|
| <input type="checkbox"/>  | 2018-0812-0767   | Security            | 00:18:8E:20:22:2E | T301_Lead  | Ekahau_Loc | Front_ayer | 14    | 11min  |
| <input type="checkbox"/>  | 2018-0812-0930   | Asson Ph...10:54:A2 | 00:01:3E:10:54:A2 | T301_Lead  | Ekahau_Loc | Conf Room  | 14    |        |
| <input type="checkbox"/>  | 2018-0814-7503   | Clay                | 00:18:8E:20:1C:EF | T301_Lead  | Ekahau_Loc | Front_ayer | 14    | 11min  |
| <input type="checkbox"/>  | 2018-091-10820   | Guest 4             | 00:18:8E:20:2A:49 | T301_Lead  | Ekahau_Loc | Front_ayer | 14    | 11min  |
| <input type="checkbox"/>  | 2018-091-07951   | Guest 1             | 00:18:8E:20:1F:0E | T301_Lead  | Ekahau_Loc | Front_ayer | 14    | 11min  |
| <input type="checkbox"/>  | 2018-092-10833   | Guest 3             | 00:18:8E:20:2A:82 | T301_Lead  | Ekahau_Loc | Front_ayer | 14    | 11min  |
| <input type="checkbox"/>  | 2018-0814-7451   | Ernason             | 00:18:8E:20:1D:1A | T301_Lead  | Ekahau_Loc | Front_Area | 24    | 11min  |
| <input type="checkbox"/>  | 2018-082-30701   | Tujomo              | 00:18:8E:20:7F:6C | T301_Lead  | Ekahau_Loc | Tuom...fce | 74    | 10min  |
| <input type="checkbox"/>  | 5498922445       | Aerosou...77:49:39  | 00:0C:CC:77:49:39 | Ekahau_Loc | Ekahau_Loc | Conf room  | 174   |        |
| <input type="checkbox"/>  | 24688015556      | PC Card Tag         | 00:50:C2:D0:50:04 | Ekahau_Loc | Ekahau_Loc |            | 174   |        |
| <input type="checkbox"/>  | 10584124003      | Ekahau...08:40:15   | 00:18:8E:08:40:15 | T301_Lead  | Ekahau_Loc | Ball...fce | 234   |        |
| <input type="checkbox"/>  | 2018-0812-0650   | Efy Home Tag        | 00:18:8E:20:21:D1 | T301_Lead  | Ekahau_Loc | Ball...fce | 474   | 11min  |
| <input type="checkbox"/>  | 54972002100      | Aerosou...77:AA:84  | 00:0C:CC:77:AA:84 | Ekahau_Loc | Ekahau_Loc |            | 514   |        |
| <input type="checkbox"/>  | 2018-0815-7846   | Security            | 00:18:8E:20:1F:31 | T301_Lead  | Ekahau_Loc | Tuom...fce | 574   | 11min  |
| <input type="checkbox"/>  | 2018-0815-5412   | Security            | 00:18:8E:20:15:23 | 6%         | Ekahau_Loc |            | 604   | 10min  |
| <input type="checkbox"/>  | 2018-0814-8420   | Doctor 1            | 00:18:8E:20:18:94 | 6%         | Ekahau_Loc | Conf Room  | 604   | 10min  |
| <input type="checkbox"/>  | 54989224652      | Aerosou...73:3F:49  | 00:0C:CC:73:3F:49 | Ekahau_Loc | Ekahau_Loc |            | 1154  |        |
| <input type="checkbox"/>  | 2018-1007-03048  | Ekahau...00:74:0D   | 00:18:8E:00:74:0D | T301_Lead  | Ekahau_Loc | Tuom...fce | 3min  | 11min  |
| <input type="checkbox"/>  | 2018-072-11000   | Ekahau...08:42:11   | 00:18:8E:08:42:11 | T301_Lead  | Ekahau_Loc | Conf Room  | 4min  | 30min  |
| <input type="checkbox"/>  | 2018-0903-022724 | IP 1                | 00:18:8E:00:68:97 | T301_Lead  | Ekahau_Loc | Conf Room  | 4min  | 4min   |
| <input type="checkbox"/>  | 2018-071-1112462 | Confere...or Alarm  | 00:18:8E:08:3D:8D | T301_Lead  | Ekahau_Loc | Conf Room  | 4min  | 23min  |
| <input type="checkbox"/>  | 2018-13C0000000  | Server R...77:0E:8B | 00:06:66:77:0E:8B | 9%         | Ekahau_Loc |            | 5min  |        |
| <input type="checkbox"/>  | 0028803068       | Humidity...00:40:7C | 00:12:8B:00:40:7C | 85%        | Ekahau_Loc |            | 12min |        |
| <input type="checkbox"/>  | 10564793106      | T301 31:00:2E       | 00:18:8E:31:00:2E | T301_Lead  | Ekahau_Loc |            | 40min | 10min  |
| <input type="checkbox"/>  | A0620030         | G2 More...00:AB:E7  | 00:12:8B:00:AB:E7 | 89%        | Ekahau_Loc |            | 3h    |        |
| <input type="checkbox"/>  | 2018-0815-70043  | Temperature         | 00:18:8E:08:4E:00 | 84%        | Ekahau_Loc | Conf Room  | 174   | 14%    |

*The Ekahau RTLS Controller (ERC) is the centerpiece of Ekahau's complete Real Time Location System (RTLS) that accurately locates people, inventory and assets across your Wi-Fi network.*

Ekahau RTLS Controller (ERC) is a real-time location software platform that leverages any standard Wi-Fi network to track assets and people. ERC can monitor your enterprise to improve visibility, productivity, mobility, and communications. You can track anything that emits a Wi-Fi signal for real-time position and motion as well as historical location data. ERC tracks Ekahau Wi-Fi tags and badges, but it also tracks WIFI tags from other vendors and Wi-Fi enabled laptops, PDAs and barcode scanners.

**System Set-up:** ERC comes with Ekahau Site Survey (ESS), an easy-to-use, point and click application that creates positioning models during system set-up. Ekahau's innovative, patented algorithms calculate asset tracking based on signal strength measurements - turning location data into actionable information.

**Management and Monitoring** Once deployed, all tag interactions are done through the existing wireless infrastructure. You have complete control of your system, including how many tags are deployed, their status and precise location. Tags can report in at timed intervals, when a tracked object moves or stops moving, in response to a button press or when triggered by a tamper sensor or help switch.

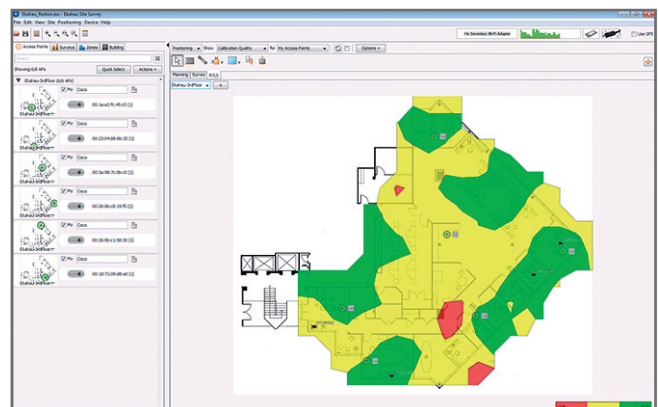
Ekahau Wi-Fi tags can be associated with asset ID information such as name, serial number, department as well as application-specific operational parameters. This association makes it simple to find and manage specific objects within a particular geographical area.

## Features

- Tracks and locates Wi-Fi tags, computers, PDAs and other Wi-Fi devices
- Uses patented, proven algorithms to produce best-in-class accuracy
- Integrates with a variety of 3rd party platforms, applications and middleware
- Can track any Wi-Fi enabled device
- Manages location history and provides an intuitive navigation interface
- Programs and manages Wi-Fi tags over the air anywhere within the Wi-Fi network
- Advanced sensor reporting and management for temperature, humidity, motion and others

## Benefits

- Improve staff productivity
- Reduce asset and inventory costs
- Improve process visibility
- Enhance safety and security



**Integration** ERC can be seamlessly integrated into your existing middleware, database, ERP, workflow, and other systems, enabling automated or on-demand monitoring and reporting. ERC's open architecture is designed to fit into the way you do business and is the only RTLS software that works with any Wi-Fi network.



Healthcare



Retail



Logistics



Manufacturing



Government



Process Industries



Other Industries

# Technical Specifications

## System Capabilities:

- Compatible with all standard 802.11 a/b/g/n Wi-Fi (wireless LAN) network technologies including autonomous and lightweight AP networks
- Locates Ekahau tags operating in associating mode for advanced, bi-directional applications and non-associating mode for basic applications
- Supports WPA2-PSK, WEP and open authentication
- Easy system design and deployment using Ekahau Site Survey
- Best-in-class performance for accuracy, easy-of-use, and cost effective operation, patented algorithms compensate for access point outages and environmental changes
- Web-based tracking and management console for remote configuration of location tags and system monitoring
- A single ERC running on a standard enterprise class server supports campus or enterprise-wide deployments of up to 20,000 tracked objects and up to 600 locations per second
- Quick application integration via HTTP/XML Application Programming Interface and SDK (Software Development Kit)
- Supports Integrated Windows Authentication

## System Requirements:

- Wireless network: Standard 802.11 a/b/g/n Wi-Fi network
- Ekahau Positioning Engine Server: At least 3GHz CPU, 2 GB of RAM, Windows® XP Professional, Windows 2000, Windows 2003 Server (32 and 64 bit), Windows 2008 Server (32 and 64 bit)
- Ekahau Site Survey Laptop: At least 1.2 GHz CPU, 1 GB of RAM, Windows XP, Vista, or 7 Operating System
- Tracked devices: Ekahau T201 and T301 series tags and supported Wi-Fi enabled devices such as laptops and PDAs

For more information about Ekahau Positioning Engine and other Ekahau solutions go to [www.ekahau.com](http://www.ekahau.com)

[www.ekahau.com](http://www.ekahau.com)  
[sales@ekahau.com](mailto:sales@ekahau.com)  
[info@ekahau.com](mailto:info@ekahau.com)

© 2000-2010 Ekahau, Inc, All rights reserved. Ekahau™

## USA

East Coast  
1851 Alexander Bell Drive  
Suite 300  
Reston, VA 20191  
Tel: 1-866-4EKAHAU  
Fax: 1-703-860-2028  
[sales-americas@ekahau.com](mailto:sales-americas@ekahau.com)

West Coast  
12930 Saratoga Avenue,  
Suite B-8  
Saratoga, CA 95070  
Tel: 1-866-4EKAHAU  
Fax: 1-703-860-2028  
[sales-americas@ekahau.com](mailto:sales-americas@ekahau.com)

## EUROPE

Hiilikatu 3  
00180 Helsinki, Finland  
Tel: +358-20-743 5910  
Fax: +358-20-743 5919  
[sales-europe@ekahau.com](mailto:sales-europe@ekahau.com)

## ASIA

1-64-7 Den-en-chofu, Oota-ku  
Tokyo 145-0071, JAPAN  
Tel: +81-90-8514 7882  
[sales-asia@ekahau.com](mailto:sales-asia@ekahau.com)

Global Tech Support: [support@ekahau.com](mailto:support@ekahau.com)